

Генераторы среднего напряжения серии GMV

Технические характеристики

По вопросам продаж и поддержки обращайтесь:

Алматы (727)345-47-04
Ангарск (3955)60-70-56
Архангельск (8182)63-90-72
Астрахань (8512)99-46-04
Барнаул (3852)73-04-60
Белгород (4722)40-23-64
Благовещенск (4162)22-76-07
Брянск (4832)59-03-52
Владивосток (423)249-28-31
Владикавказ (8672)28-90-48
Владимир (4922)49-43-18
Волгоград (844)278-03-48
Вологда (8172)26-41-59
Воронеж (473)204-51-73
Екатеринбург (343)384-55-89

Иваново (4932)77-34-06
Ижевск (3412)26-03-58
Иркутск (395)279-98-46
Казань (843)206-01-48
Калининград (4012)72-03-81
Калуга (4842)92-23-67
Кемерово (3842)65-04-62
Киров (8332)68-02-04
Коломна (4966)23-41-49
Кострома (4942)77-07-48
Краснодар (861)203-40-90
Красноярск (391)204-63-61
Курск (4712)77-13-04
Курган (3522)50-90-47
Липецк (4742)52-20-81

Магнитогорск (3519)55-03-13
Москва (495)268-04-70
Мурманск (8152)59-64-93
Набережные Челны (8552)20-53-41
Нижний Новгород (831)429-08-12
Новокузнецк (3843)20-46-81
Ноябрьск (3496)41-32-12
Новосибирск (383)227-86-73
Омск (3812)21-46-40
Орел (4862)44-53-42
Оренбург (3532)37-68-04
Пенза (8412)22-31-16
Петрозаводск (8142)55-98-37
Псков (8112)59-10-37
Пермь (342)205-81-47

Ростов-на-Дону (863)308-18-15
Рязань (4912)46-61-64
Самара (846)206-03-16
Санкт-Петербург (812)309-46-40
Саратов (845)249-38-78
Севастополь (8692)22-31-93
Саранск (8342)22-96-24
Симферополь (3652)67-13-56
Смоленск (4812)29-41-54
Сочи (862)225-72-31
Ставрополь (8652)20-65-13
Сургут (3462)77-98-35
Сыктывкар (8212)25-95-17
Тамбов (4752)50-40-97
Тверь (4822)63-31-35

Тольятти (8482)63-91-07
Томск (3822)98-41-53
Тула (4872)33-79-87
Тюмень (3452)66-21-18
Ульяновск (8422)24-23-59
Улан-Удэ (3012)59-97-51
Уфа (347)229-48-12
Хабаровск (4212)92-98-04
Чебоксары (8352)28-53-07
Челябинск (351)202-03-61
Череповец (8202)49-02-64
Чита (3022)38-34-83
Якутск (4112)23-90-97
Ярославль (4852)69-52-93

Россия +7(495)268-04-70

Казахстан +(727)345-47-04

Беларусь +(375)257-127-884

Узбекистан +998(71)205-18-59

Киргизия +996(312)96-26-47

эл.почта: esf@nt-rt.ru || сайт: <https://elcos.nt-rt.ru/>

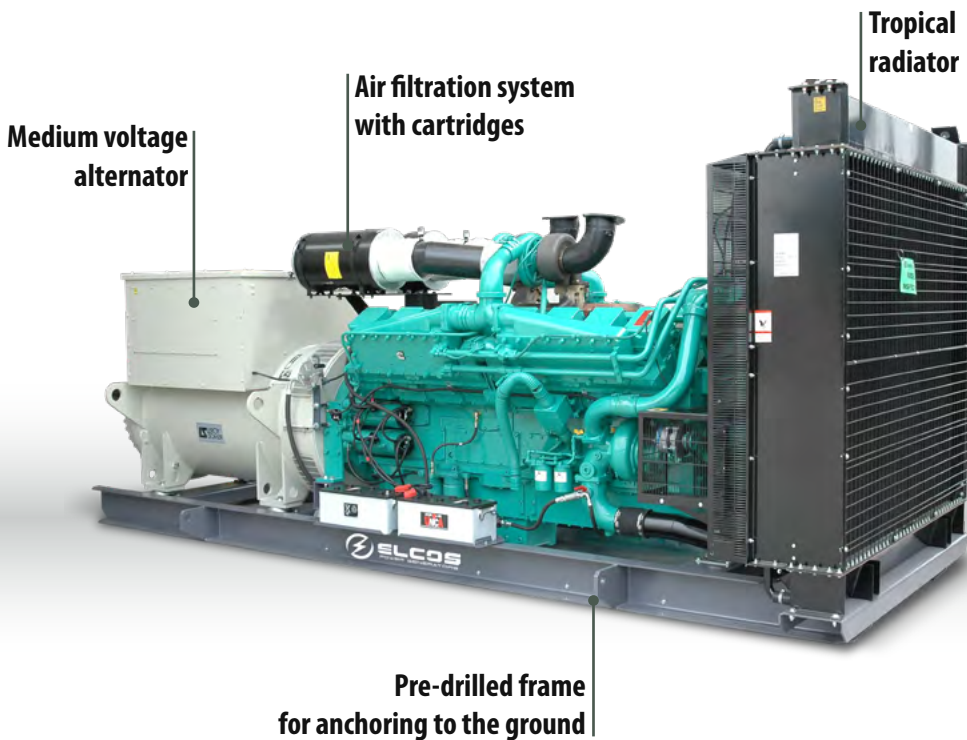
GMV.BF

Power range **800-3000 kVA**

Diesel 1500-1800 RPM

50Hz **3.3kV - 6/6.3/6.6kV - 10/11kV**

60Hz **4kV - 7.2/11.4kV - 12.4/13kV**



Battery holder
designed for easy maintenance and replacement



Oil change pump
it facilitates oil change



Rotating part guards
to prevent injuries to the user

QPE POLYVALENT PANEL

Applications

- ◆ Auto-production (island)
- ◆ Emergency to the mains

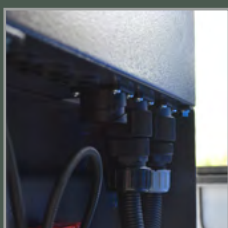
MC4# evo



+011 VARIANT

Variant +011
Without integrated switching

With this variant the SWITCHING is externally managed through separate ATS panels (optional).



Wiring
excellent degree of resistance with plug in connectors



Engine heater
for easier cranking in cold environment



Lifting lugs
allow lifting of the machine



External Connectors
standard feature in models without tank



Anti-vibration pads
attenuate the vibrations caused by the unit

GMV.BF

Power range **800-3000 kVA**

Diesel 1500-1800 RPM

50Hz 3.3kV - 6/6.3/6.6kV - 10/11kV

60Hz 4kV - 7.2/11.4kV - 12.4/13kV



50 HZ 60 HZ

50 HZ 60 HZ

BRAND

CODE

COOLING

STAGE

GOVERNOR

L x W x H

WEIGHT Kg

TANK It

800 kVA

| | | | | | | | | | | | | |
|--------------------------|-----|------|-----|-----|---------|---------------|------|---------|---|-------------|------|---------|
| GMV.CU.890/800.BF | 886 | 1000 | 805 | 910 | Cummins | QSK23G3 | W50° | Stage 0 | E | 468x167x216 | 6898 | No Tank |
| GMV.MT.870/780.BF | 865 | - | 783 | - | MTU | 12V 2000 G26F | W50° | Stage 0 | E | 460x170x210 | 6487 | No Tank |
| GMV.PK.880/800.BF | 880 | 940 | 800 | 845 | Perkins | 4006-23TAG3A | W50° | Stage 0 | E | 440x175x220 | 6002 | No Tank |

1000 kVA

| | | | | | | | | | | | | |
|----------------------------|------|------|------|------|---------|---------------|------|---------|---|-------------|------|---------|
| GMV.CU.1101/1001.BF | 1100 | - | 1000 | - | Cummins | KTA38G5 | W50° | Stage 0 | E | 450x180x225 | 8568 | No Tank |
| GMV.CU.1100/1000.BF | 1100 | 1256 | 1000 | 1146 | Cummins | QST30G4 | W50° | Stage 0 | E | 420x200x235 | 7305 | No Tank |
| GMV.MT.1100/1000.BF | 1106 | - | 1005 | - | MTU | 16V 2000 G26F | W50° | Stage 0 | E | 450x200x215 | 7646 | No Tank |
| GMV.PK.1130/1000.BF | 1124 | 1125 | 1022 | 1000 | Perkins | 4008-TAG2A | W50° | Stage 0 | E | 470x175x220 | 7970 | No Tank |

1250 kVA

| | | | | | | | | | | | | |
|----------------------------|------|------|------|------|------------|---------------|------|---------|---|-------------|-------|---------|
| GMV.CU.1390/1260.BF | 1386 | 1610 | 1260 | 1418 | Cummins | KTA50G3 | W50° | Stage 0 | E | 520x170x240 | 10184 | No Tank |
| GMV.MH.1390/1260.BF | 1390 | 1500 | 1280 | 1350 | Mitsubishi | S12R-PTA | W50° | Stage 0 | E | 450x200x235 | 11544 | No Tank |
| GMV.MT.1370/1250.BF | 1370 | - | 1250 | - | MTU | 18V 2000 G26F | W50° | Stage 0 | E | 520x190x255 | 8837 | No Tank |
| GMV.PK.1380/1250.BF | 1378 | 1378 | 1253 | 1253 | Perkins | 4012-46TWG2A | W50° | Stage 0 | E | 485x180x235 | 9660 | No Tank |

1400 kVA

| | | | | | | | | | | | | |
|----------------------------|------|------|------|------|------------|--------------|------|---------|---|-------------|-------|---------|
| GMV.CU.1540/1400.BF | 1540 | - | 1400 | - | Cummins | KTA50G8 | W50° | Stage 0 | E | 560x200x240 | 11209 | No Tank |
| GMV.MH.1540/1400.BF | 1520 | 1680 | 1380 | 1520 | Mitsubishi | S12R-PTA2 | W50° | Stage 0 | E | 450x200x235 | 11444 | No Tank |
| GMV.PK.1500/1370.BF | 1500 | 1500 | 1364 | 1364 | Perkins | 4012-46TWG3A | W50° | Stage 0 | E | 520x190x255 | 9778 | No Tank |

1500 kVA

| | | | | | | | | | | | | |
|----------------------------|------|------|------|------|------------|--------------|------|---------|---|-------------|-------|---------|
| GMV.CU.1690/1540.BF | 1690 | - | 1540 | - | Cummins | QSK50G4 | W50° | Stage 0 | E | 480x200x340 | 12323 | No Tank |
| GMV.MH.1690/1540.BF | 1650 | 1880 | 1510 | 1700 | Mitsubishi | S12R-PTAA2 | W50° | Stage 0 | E | 480x200x340 | 11752 | No Tank |
| GMV.PK.1660/1500.BF | 1656 | 1656 | 1505 | 1505 | Perkins | 4012-46TWG4A | W50° | Stage 0 | E | 510x230x240 | 10104 | No Tank |

1700 kVA

| | | | | | | | | | | | | |
|----------------------------|------|------|------|------|------------|---------------|------|---------|---|-------------|-------|---------|
| GMV.MH.1900/1730.BF | 1880 | 2000 | 1720 | 1820 | Mitsubishi | S16R-PTA | W50° | Stage 0 | E | 530x200x260 | 14098 | No Tank |
| GMV.MT.1820/1650.BF | 1815 | 1875 | 1650 | 1700 | MTU | 12V 4000 G14F | W50° | Stage 0 | E | 500x200x250 | 12691 | No Tank |
| GMV.PK.1880/1700.BF | 1876 | 1880 | 1705 | 1710 | Perkins | 4012-46TAG3A | W50° | Stage 0 | E | 510x220x270 | 11915 | No Tank |

1900 kVA

| | | | | | | | | | | | | |
|----------------------------|------|------|------|------|------------|---------------|------|---------|---|-------------|-------|---------|
| GMV.CU.2080/1890.BF | 2079 | - | 1890 | - | Cummins | QSK60G3 | W50° | Stage 0 | E | 600x250x330 | 13906 | No Tank |
| GMV.MH.2090/1900.BF | 2080 | 2280 | 1900 | 2070 | Mitsubishi | S16R-PTA2 | W50° | Stage 0 | E | 530x200x255 | 14528 | No Tank |
| GMV.MT.2040/1850.BF | 2035 | 2200 | 1850 | 2000 | MTU | 12V 4000 G24F | W50° | Stage 0 | E | 500x200x250 | 12901 | No Tank |
| GMV.PK.2030/1850.BF | 2028 | - | 1844 | - | Perkins | 4016-61TRG1 | W50° | Stage 0 | E | 550x250x270 | 13473 | No Tank |

2000 kVA

| | | | | | | | | | | | | |
|----------------------------|------|------|------|------|------------|---------------|------|---------|---|-------------|-------|---------|
| GMV.CU.2240/2040.BF | 2237 | - | 2034 | - | Cummins | QSK60G4 | W50° | Stage 0 | E | 600x250x340 | 14190 | No Tank |
| GMV.MH.2200/2000.BF | - | - | - | - | Mitsubishi | S16R-PTAA2 | W50° | Stage 0 | E | 602x215x255 | 14820 | No Tank |
| GMV.MT.2300/2100.BF | 2300 | 2500 | 2100 | 2275 | MTU | 16V 4000 G14F | W50° | Stage 0 | E | 610x230x300 | 14735 | No Tank |
| GMV.PK.2265/2060.BF | 2250 | - | 2000 | - | Perkins | 4016-61TRG2 | W50° | Stage 0 | E | 600x220x255 | 13757 | No Tank |

2300 kVA

| | | | | | | | | | | | | |
|----------------------------|------|------|------|------|------------|---------------|------|---------|---|-------------|-------|---------|
| GMV.PK.2500/2250.BF | 2500 | - | 2250 | - | Perkins | 4016-61TRG3 | W50° | Stage 0 | E | 610x230x300 | 14216 | No Tank |
| GMV.MH.2500/2280.BF | 2500 | - | 2280 | - | Mitsubishi | S16R2-PTAW | W50° | Stage 0 | E | 610x230x300 | 16966 | No Tank |
| GMV.MT.2530/2300.BF | 2530 | 2750 | 2300 | 2500 | MTU | 16V 4000 G24F | W50° | Stage 0 | E | 610x230x300 | 15714 | No Tank |
| GMV.MH.2640/2400.BF | 2640 | - | 2400 | - | Mitsubishi | S16R2-PTAW-E | W50° | Stage 0 | E | 610x230x300 | 18298 | No Tank |

2500 kVA

| | | | | | | | | | | | | |
|----------------------------|------|------|------|------|-----|---------------|------|---------|---|-------------|-------|---------|
| GMV.MT.2800/2550.BF | 2805 | 3125 | 2550 | 2813 | MTU | 20V 4000 G14F | W50° | Stage 0 | E | 665x232x278 | 19322 | No Tank |
|----------------------------|------|------|------|------|-----|---------------|------|---------|---|-------------|-------|---------|

2800 kVA

| | | | | | | | | | | | | |
|----------------------------|------|------|------|------|---------|---------------|------|---------|---|-------------|-------|---------|
| GMV.CU.3000/2750.BF | 3000 | - | 2750 | - | Cummins | QSK78G9 | W50° | Stage 0 | E | 650x200x275 | 18997 | No Tank |
| GMV.MT.3000/2800.BF | 3080 | 3438 | 2800 | 3125 | MTU | 20V 4000 G24F | W50° | Stage 0 | E | 650x200x275 | 19492 | No Tank |

3000 kVA

| | | | | | | | | | | | | |
|----------------------------|------|------|------|------|-----|---------------|------|---------|---|-------------|-------|---------|
| GMV.MT.3360/3000.BF | 3355 | 3750 | 3050 | 3450 | MTU | 20V 4000 G34F | W50° | Stage 0 | E | 650x200x275 | 20033 | No Tank |
|----------------------------|------|------|------|------|-----|---------------|------|---------|---|-------------|-------|---------|



Engine

- Heavy duty air filter
- Fuel/Water separator filter
- Engine liquids -40 °C
- Oil suction pump
- Dual redundant starter motors
- Super hot 230 Vac engine pre-heater
- Automatic oil refilling system



Alternator

- 230 Vac anti-condensation heaters
- RTD-PT100 probes on stator windings
- PT100 probe on bearings
- Temperature control unit up to 4 PT100 probes
- Joint and bell housing for coupling in double-bearing alternators



Batteries

- Redundant battery system
- DC isolator
- Maintenance free high efficiency starter batteries
- 24Vdc NiCd starter batteries



Exhaust

- Catalytic MC converter (CAT)
- Particulate filter (DPF)
- Spark arrestor
- Residential muffler -35 dBA
- Assembly of residential muffler on board
- Exhaust bellow with flexible joint





Electrical system

QPE

16-relay module

RS485 Converter LAN / USB

MASTER / SLAVE device

GSM remote management modem

Remote panel

Remote management software

WEB remote management system via LAN/GSM/GPRS with GPS

Option with QBM DSE 7320 on board

Option with QBM ComAp AMF25 on board

QP.APM Parallel panel

Automatic parallel panel with ComAp Intellivision control

Module to manage multiple units in parallel to the Mains

Transformers



Services

Factory Acceptance Test (FAT)

Vibration test



Tanks

Double wall fuel tanks with feet and tear valve

Single wall fuel tank for outdoor with bunded base and roof

External tanks and automatic fuel refilling systems

Automatic fuel refilling system with bunded base

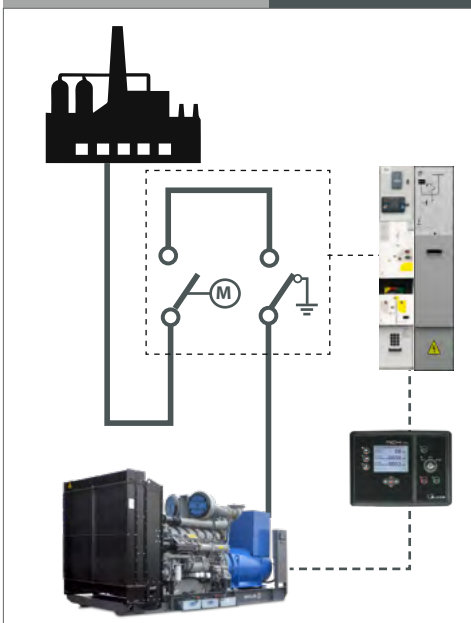
Tanks with bunded base on trestle

Medium Voltage Parallel panel system



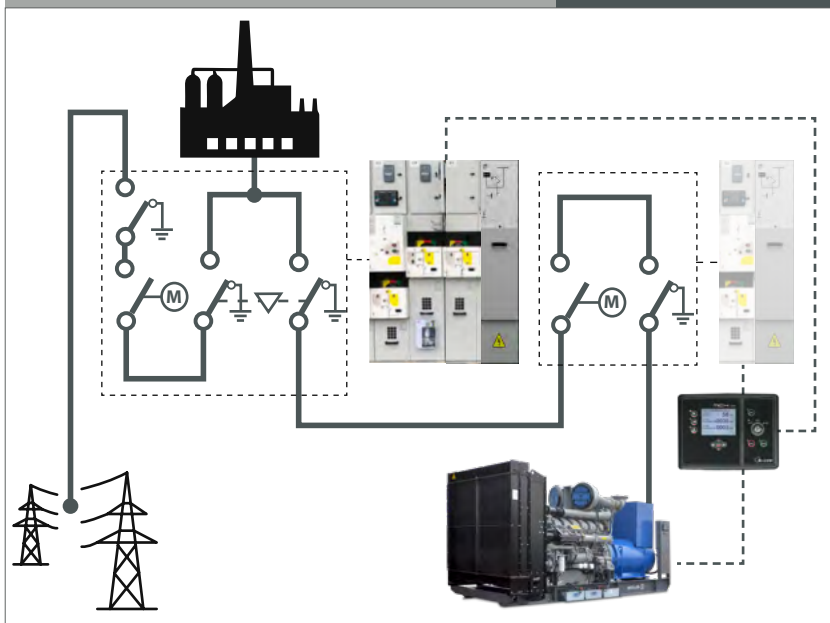
QMV

QMV.SWC-12KV Switching



MV switchgear from 3 to 12kV with motorized vacuum switch and SF6 disconnector, Sepam S10 protection relay + cable descent module

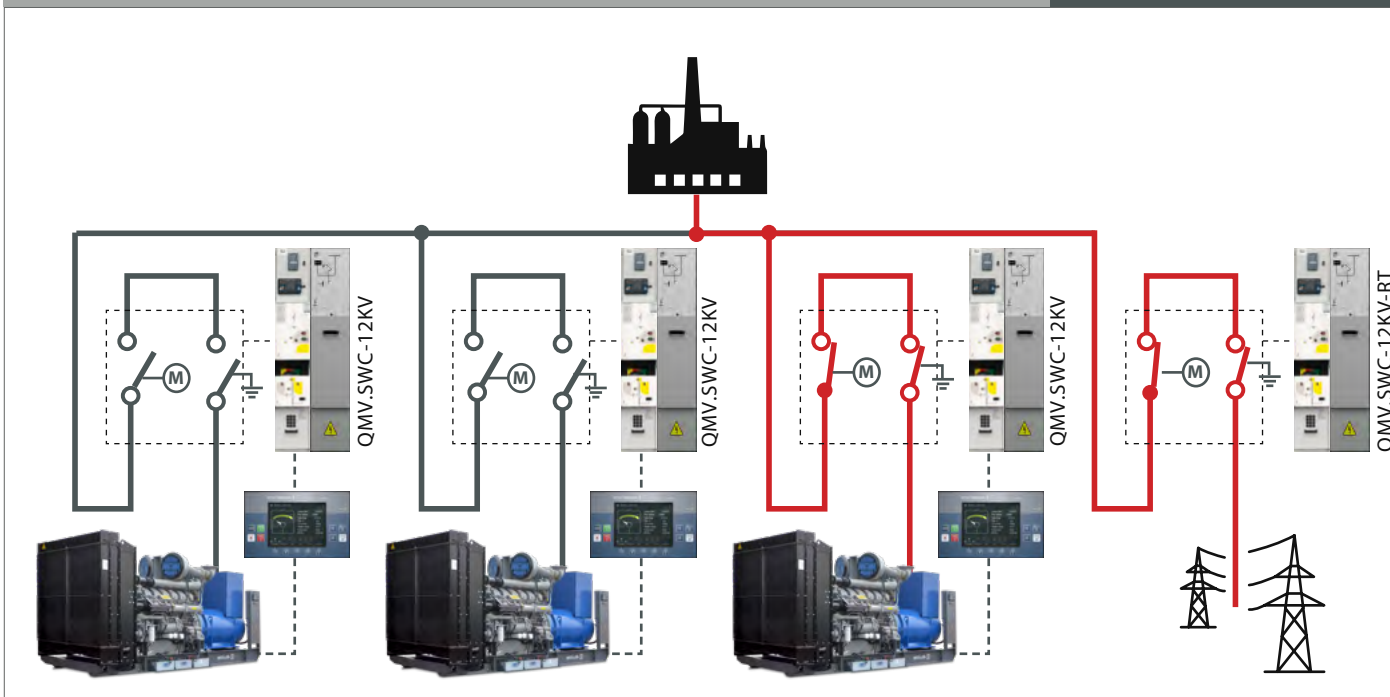
QMV.QC-12KV-SWC-RT Commutation

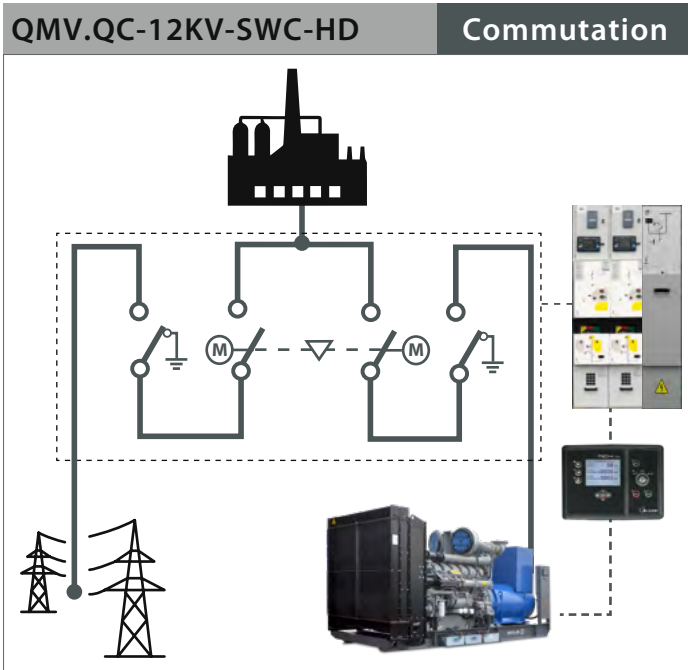


Switching panel from 3 to 12kV consisting of 2 MV switchgear with interlocked disconnectors, with mains-side protection switch, with Sepam S10 protection relay + cable descent module

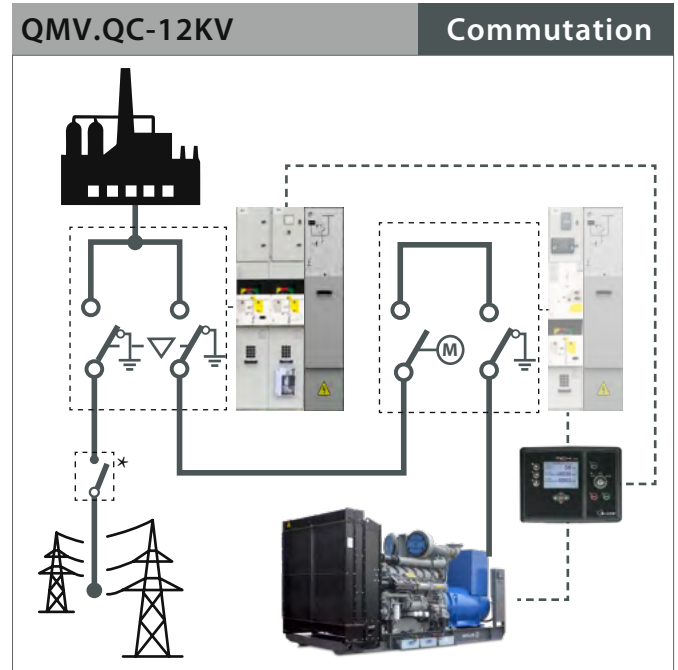
QMV.QC-12KV + QMV.SWC-12KV-RT

Parallel system





HD switching panel from 3 to 12kV composed of 2 MV switchgear with disconnectors, with interlocked motorized vacuum breaker, with Sepam S10 protection relay + cable descent module



Switching panel from 3 to 12kV composed of 2 MV switchgear with interlocked disconnectors, without protection switch, without protection relay + cable descent module



QMV Optional

Installation of a single MV Panel in a container with auxiliary electrical connections (Medium Voltage Cables excluded)

Medium Voltage cables for installation up to 10 mt x 3 phases + cable headers

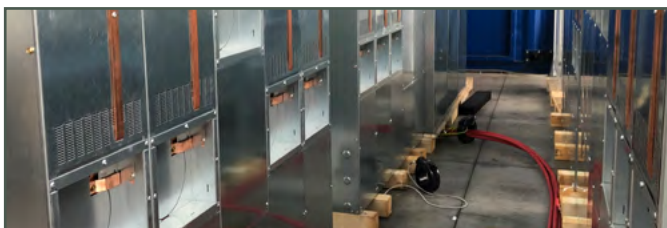
Sepam S20 protection relay for MV switchgear

Thytronic NA016 protection relay for MV switchgear (Italian market)



QMV.APM-GMV-SM Measurement compartment for parallel management on the MAINS side, equipped with a socket for cable entry and exit from the bottom, 3 TV for mains voltage readings

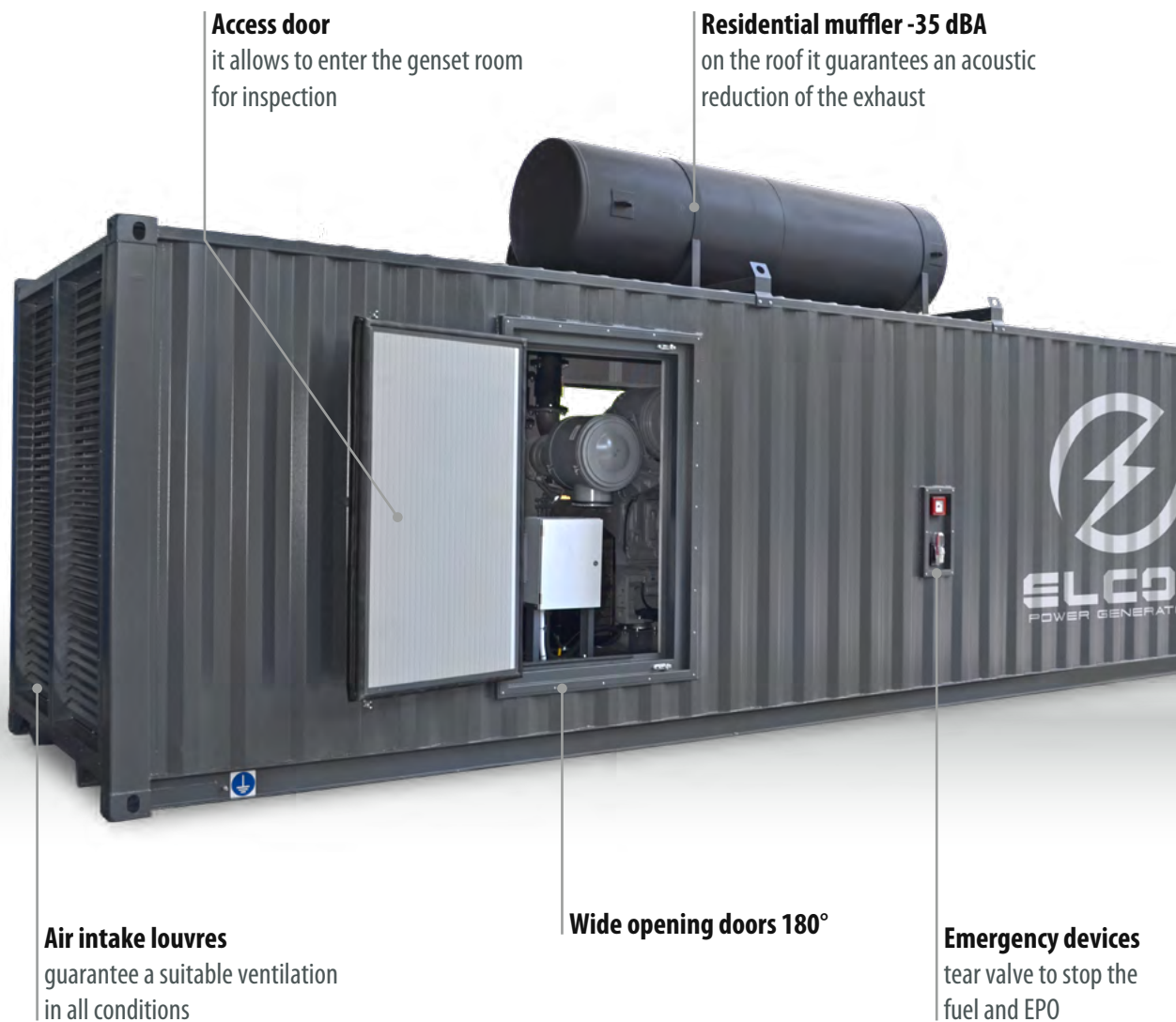
QMV.SWC-12KV-RT MV switchgear from 3 to 12kV 400A for parallel management of the network, with motorized vacuum switch and SF6 disconnector, Sepam S10 protection relay + cable descent module (it includes QP.IM-NT for more management GMV in parallel network)





CONTAINER

Iso Range 20'/20'HC - 30'/30'HC - 40'/40' HC



Access door

it allows to enter the genset room for inspection

Residential muffler -35 dBA

on the roof it guarantees an acoustic reduction of the exhaust

Air intake louvres

guarantee a suitable ventilation in all conditions

Wide opening doors 180°

Emergency devices

tear valve to stop the fuel and EPO



Tear valve

interrupts the flow of diesel fuel in the event of an emergency



Padding material

is composed of different types like class 1 micro-perforated panels



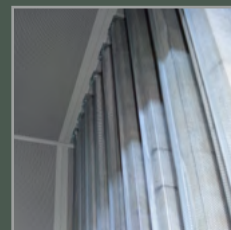
Discharge passage

allows to connect the muffler outside the engine



Electrical system

lighting and internal EMF facilitate the staff when inside



Sound-absorbing partitions

reduce the noise perceived outside



IP door gasket
it guarantees a remarkable tightness to isolate the generated noise



Air intake louvres
and special attenuators for acoustic insulation



Door lock
for soundproof and tamperproof



Maintenance doors
they guarantee a comfortable inspection and maintenance

***Electrical Driven Radiator**



70 EDR* model
residential -40 dBA muffler built-in in the roof

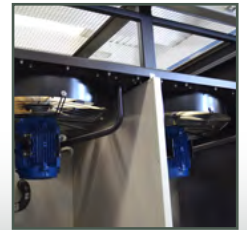
ISO corner castings



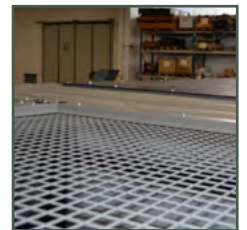
Forklift tunnels
to ensure safe lifting and handling



70 EDR* model
fully removable machine, big tank on board and room forced ventilation



70 EDR* model
VSD driven fan remote radiator properly sized for the temperature



Air outlet louvres
with metal mesh to protect the expulsion from leaves/dirt



Emergency button
lever to stop the oil and EPO



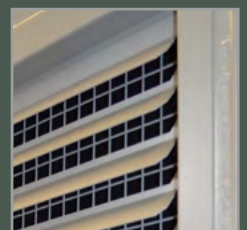
Air intake louvres
guarantee a suitable ventilation in all conditions



Control & Command panel IP 55
accessible from the outside



Residential Muffler
on the roof it guarantees an acoustic reduction of the exhaust noise



Louvres
special inclined grills to protect against rain and wire anti-mouse mesh

.CONTAINER



Access

Control panel cabinet inspection door (double door)

Control panel cabinet inspection door (single door)

Panic release pushbutton for service door

Expulsion compartment walkway

Double hinged door with wide (180°) opening

Shelter above access door (for single hinged control panel)

Shelter above access door (for double hinged control panel)

Doorstop



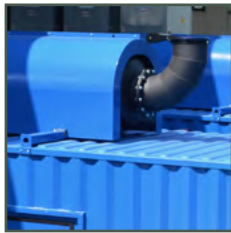
Aspiration / Expulsion

Front vertical air outlet louvres

Vertical gravity louvres

Vertical motorized louvres

VSD driven fan remote radiator



Exhaust

External muffler with insulated casing

Internally mounted muffler



Fuel Supply

Tanks and automatic fuel refilling systems

Double wall tanks with feet and tear valve

4000/5000 Lts. tank space-optimized for containers

External refill with signal lamp

External refill with analogue level indicator

Fuel connections with 3-way valve & quick couplings

Bunded floor area with drainage to the outside

Tank installation in container with dividing fireproof wall



Certifications

Rina Certification

Atex Certification



Fire Prevention System

Fire detection kit Including thermal and optical sensors, control unit, optical and acoustic indicator, emergency button

Fire extinguishing kit with CO2 gas, including: CO2 cylinder, gas collection manifolds, distribution piping and nozzles

Fire detection and extinguishing kit

PTFE oil hoses reinforced with stainless steel sleeve



Electrical System

Installation and connection of power panel

Dedicated panel room with external access door

Cable entry from below

Outdoor container lighting

Door opening alarm system

Air extractor with ambient probe

Engine compartment electric heating kit

Automatic container temperature control system



Painting

Total custom container painting

High resistance painting for corrosive environments



Various

Galvanized checkered floor plates, thickness 3+2 mm

Testing Rooms

TR1

Testing Room 1 from 5 to 1000 kW Certified for phonometric tests

LOW Voltage

50 Hz
400 - 380 - 230 V
60 Hz
480 - 240 - 208 - 220 - 277 V

DC Voltage

48 VDC



Features of Testing Room N° 1

- 607 kW x 2 automatic test with 10 load steps
- 35 kW automatic test with 10 load steps
- 10 kW automatic test in DC with 10 load steps
- Full tests with 6 PT 100 probes, 3 thermal probes
- Air flow test with anemometer
- Vibrations test
- Phonometric test
- Data registration by MODBUS

TR2

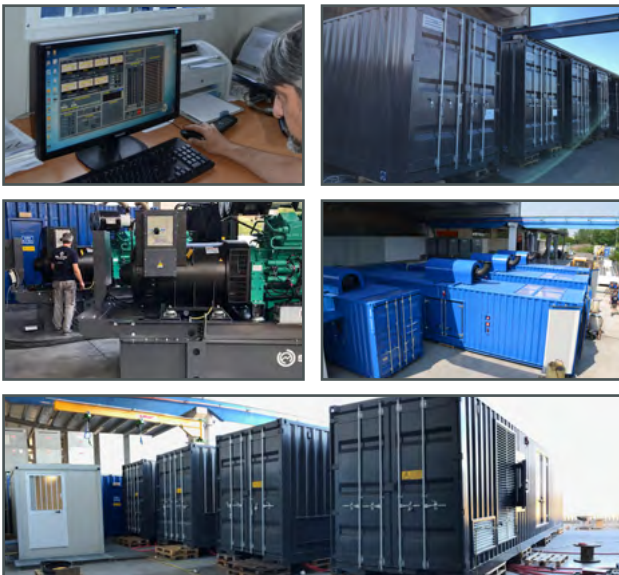
Testing Room 2 from 250 to 4000 kW

LOW Voltage

50 Hz
400 - 380 - 230 V
60 Hz
480 - 240 - 208 - 220 - 277 V

MEDIUM Voltage

50 Hz
3/3.3 - 6/6.3/6.6 - 10/11 - 15 kV
60 Hz
4 - 7.2/11.4 - 12.4/13 kV



Features of Testing Room N° 2

- 3000 kW automatic test with 20 load steps
- Multi-voltage transformer with MV cells
- Full tests with 6 PT 100 probes, 3 thermal probes
- Parallel test for up to 6 containers
- Air flow test with anemometer
- Vibrations test
- Phonometric test
- Data registration by MODBUS

About us



45
Years of experience

Company

Elcos is located in Northern Italy, in the province of Cremona. It has been operating in the domestic and international market for over forty-five years.



Elcos researches and develops products that use innovative technologies in order to optimize its production efficiency and performances provided by its systems, offering the user (from 1 to 3150 kVA) a customized product.

Elcos is an independent group that designs and produces in Italy power generation systems (emergency and self-production) intended for the international market. ELCOS has promoted an internal behavioural code based on customer satisfaction.

Product quality and customer satisfaction: the passions that guide us. The R&D department is constantly studying the possibilities of technological innovation to improve the products proposed, to explore the possibilities of new products and to improve production processes. Always focused on quality, ensuring conformity of the product and the processes according to legislation, by respecting environmental issues.



The R&D department implements existing systems and looks forward to future opportunities that can meet the

Other Elcos products

| | | | | | |
|---------------|-----------------|----------------|---------------|---------------|-----------------|
| GE-RB | GE-SS | GE-BF | GE-TLC | GMV-BF | NO BREAK |
| | | | | | |
| GDC-HS | GDC-SAPS | GE-ECHO | GE-ZIP | TF | AGRIPLUS |
| | | | | | |

По вопросам продаж и поддержки обращайтесь:

Алматы (727)345-47-04
Ангарск (3955)60-70-56
Архангельск (8182)63-90-72
Астрахань (8512)99-46-04
Барнаул (3852)73-04-60
Белгород (4722)40-23-64
Благовещенск (4162)22-76-07
Брянск (4832)59-03-52
Владивосток (423)249-28-31
Владикавказ (8672)28-90-48
Владимир (4922)49-43-18
Волгоград (844)278-03-48
Вологда (8172)26-41-59
Воронеж (473)204-51-73
Екатеринбург (343)384-55-89

Иваново (4932)77-34-06
Ижевск (3412)26-03-58
Иркутск (395)279-98-46
Казань (843)206-01-48
Калининград (4012)72-03-81
Калуга (4842)92-23-67
Кемерово (3842)65-04-62
Киров (8332)68-02-04
Коломна (4966)23-41-49
Кострома (4942)77-07-48
Краснодар (861)203-40-90
Красноярск (391)204-63-61
Курск (4712)77-13-04
Курган (3522)50-90-47
Липецк (4742)52-20-81

Магнитогорск (3519)55-03-13
Москва (495)268-04-70
Мурманск (8152)59-64-93
Набережные Челны (8552)20-53-41
Нижний Новгород (831)429-08-12
Новокузнецк (3843)20-46-81
Ноябрьск (3496)41-32-12
Новосибирск (383)227-86-73
Омск (3812)21-46-40
Орел (4862)44-53-42
Оренбург (3532)37-68-04
Пенза (8412)22-31-16
Петрозаводск (8142)55-98-37
Псков (8112)59-10-37
Пермь (342)205-81-47

Ростов-на-Дону (863)308-18-15
Рязань (4912)46-61-64
Самара (846)206-03-16
Санкт-Петербург (812)309-46-40
Саратов (845)249-38-78
Севастополь (8692)22-31-93
Саранск (8342)22-96-24
Симферополь (3652)67-13-56
Смоленск (4812)29-41-54
Сочи (862)225-72-31
Ставрополь (8652)20-65-13
Сургут (3462)77-98-35
Сыктывкар (8212)25-95-17
Тамбов (4752)50-40-97
Тверь (4822)63-31-35

Тольятти (8482)63-91-07
Томск (3822)98-41-53
Тула (4872)33-79-87
Тюмень (3452)66-21-18
Ульяновск (8422)24-23-59
Улан-Удэ (3012)59-97-51
Уфа (347)229-48-12
Хабаровск (4212)92-98-04
Чебоксары (8352)28-53-07
Челябинск (351)202-03-61
Череповец (8202)49-02-64
Чита (3022)38-34-83
Якутск (4112)23-90-97
Ярославль (4852)69-52-93

Россия +7(495)268-04-70

Казахстан +(727)345-47-04

Беларусь +(375)257-127-884

Узбекистан +998(71)205-18-59

Киргизия +996(312)96-26-47

эл.почта: esf@nt-rt.ru || сайт: <https://elcos.nt-rt.ru/>